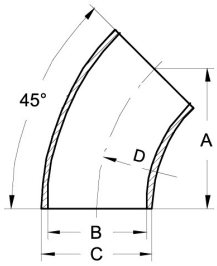


Fittings for welding DIN 11852

Art.No EUR Art.No EUR

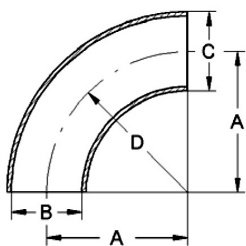
Bend 45° inch



DN	A	B	C	D	AISI304		AISI316L-1.4404	
1"	18	22,9	25,4	27,5	561103	16,40	561203	23,70
1,5"	30	35,1	38,1	45	561104	24,80	561204	39,20
2"	46	47,8	50,8	67,5	561105	30,10	561205	46,10
2,5"	57	60,5	63,5	82,5	561106	42,80	561206	67,80
3"	65,5	72,1	76,1	95	561107	67,60	561207	97,30
4"	93,5	97,6	101,6	133,5	561108	133,90	561208	175,90

Similar to DIN 11852

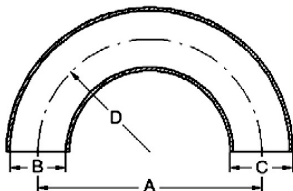
Bend 90° inch



DN	A	B	C	D	AISI304		AISI316L-1.4404	
1"	27,5	22,9	25,4	27,5	533703	16,40	533803	23,70
1,5"	45	35,1	38,1	45	533704	24,80	533804	39,20
2"	67,5	47,8	50,8	67,5	533705	30,10	533805	46,10
2,5"	82,5	60,5	63,5	82,5	533706	43,20	533806	53,60
3"	95	72,1	76,1	95	533707	56,40	533807	70,20
4"	133,5	97,6	101,6	133,5	533708	91,90	533808	112,10

Similar to DIN 11852

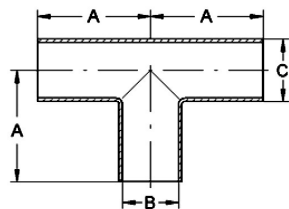
Bend 180° inch



DN	A	B	C	D	AISI304		AISI316L-1.4404	
1"	55	22,9	25,4	27,5	598003	Enquiry	598103	Enquiry
1,5"	90	35,1	38,1	45	598004	Enquiry	598104	Enquiry
2"	135	47,8	50,8	67,5	598005	Enquiry	598105	Enquiry
2,5"	165	60,5	63,76	82,5	598006	Enquiry	598106	Enquiry
3"	190	72,8	76,06	95	598007	Enquiry	598107	Enquiry
4"	267	97,4	101,6	133,5	598008	Enquiry	598108	Enquiry

Similar to DIN 11852

T-piece DIN 11852



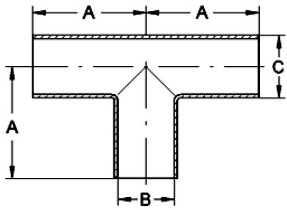
DN	A	B	C	AISI304		AISI316L-1.4404	
10	26	10	13	539830	Enquiry	539930	43,90
15	35	16	19	539831	39,10	539931	46,60
20	40	20	23	539832	42,20	539932	50,20
25	50	26	29	539833	32,60	539933	34,70
32	55	32	35	539834	37,20	539934	44,30
40	60	38	41	539835	38,20	539935	45,60
50	70	50	53	539836	43,30	539936	54,50
65	80	66	70	534337	51,30	534437	72,10
80	90	81	85	534338	62,50	534438	90,50
100	100	100	104	534339	90,70	534439	117,20
125	187,5	125	129	534341	265,50	534441	310,30
150	225	150	154	534342	371,20	534442	460,40

Fittings for welding DIN 11852

Art.No	EUR	Art.No	EUR
--------	-----	--------	-----

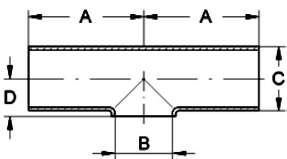
T-piece DIN 11852

DN	A	B	C			AISI304		AISI316L-1.4404	
200	300	200	204			534344	Enquiry	534444	Enquiry



T-piece DIN 11852, short

DN	A	B	C	D		AISI304		AISI316L-1.4404	
10	26	10	13	7,5		539030	Enquiry	539130	Enquiry
15	35	16	19	11		539031	21,70	539131	30,10
20	40	20	23	13		539032	20,50	539132	29,20
25	50	26	29	16		539033	26,30	539133	31,10
32	55	32	35	19,5		539034	27,30	539134	37,80
40	60	38	41	23		539035	30,20	539135	40,50
50	70	50	53	30		539036	32,40	539136	44,90
65	80	66	70	40		534537	31,30	534637	44,60
80	90	81	85	47,5		534538	43,20	534638	57,80
100	100	100	104	58		534539	57,10	534639	77,60
125	187,5	125	129	74		534541	160,90	534641	164,50
150	225	150	154	90		534542	224,80	534642	289,10
200	300	200	204	115		534544	Enquiry	534644	Enquiry



Reducing T-piece DIN 11852 (AISI304)

DN	A	B	C	D		AISI304	
15-10	35	29	19x1,5	13x1,5		560759	Enquiry
20-10	40	31	23x1,5	13x1,5		560760	Enquiry
20-15	40	37	23x1,5	19x1,5		560761	Enquiry
25-10 *	50	34	53x1,5	13x1,5		560762	Enquiry
25-15	50	40	29x1,5	19x1,5		560763	Enquiry
25-20	50	43	29x1,5	23x1,5		560764	32,30
32-15	55	43	35x1,5	19x1,5		560765	Enquiry
32-20	55	46	35x1,5	23x1,5		560766	Enquiry
32-25	55	53	35x1,5	29x1,5		560767	37,10
40-20	60	49	41x1,5	23x1,5		560769	Enquiry
40-25	60	56	41x1,5	29x1,5		560770	38,20
40-32	60	58	41x1,5	35x1,5		560771	36,80
50-25	70	62	53x1,5	29x1,5		560772	44,90
50-32	70	64	53x1,5	35x1,5		560773	Enquiry
50-40	70	66	53x1,5	41x1,5		560774	43,80
65-25 *	80	70,5	70x2	29x1,5		560775	64,10
65-32	80	72,5	70x2	35x1,5		560776	Enquiry

* Similar to DIN 11852

LINNE MANN
Rohrverbindungen • Edelstahlarmaturen
Pipe connections • Stainless steel fittings

LINNE MANN GmbH • Heerweg 14-16
72070 Tübingen / Germany

Fon: +49 (0) 7071 97555-0
Fax: +49 (0) 7071 97555-10

E-Mail: info@linnemann-online.com
Internet: www.linnemann-online.com